

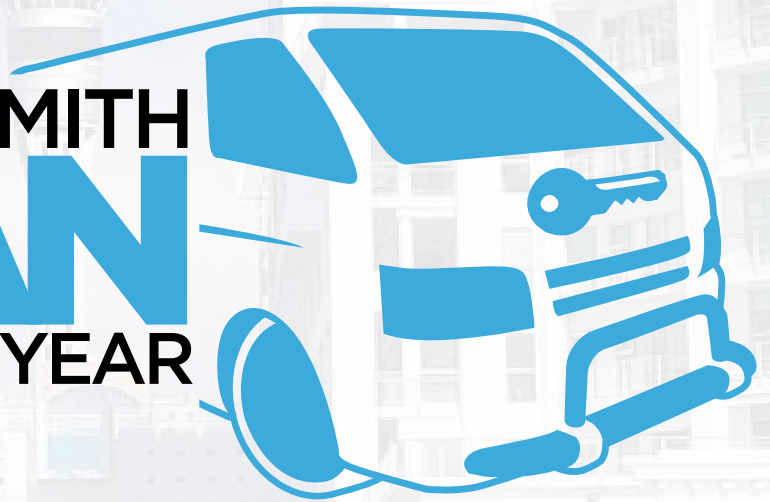
# SGLOCKS

## Newsletter

September 2019  
ISSUE 65

# 2019

LOCKSMITH  
**VAN**  
OF THE YEAR



LOCKSMITH  
**SHOP**  
OF THE YEAR



Get your entries  
in ASAP



SG Lock  
& Security

[www.sglocks.com.au](http://www.sglocks.com.au)

# JMA<sup>®</sup>

# CLICK & FIND



Art. CLICK-FIND  
**CALL FOR PRICING**

\*Real Size



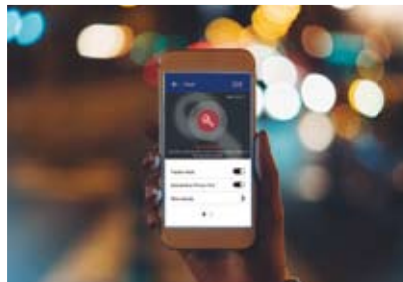
LOCATE ITEMS USING THE 'CLICK & FIND' APP ON YOUR MOBILE



FIND YOUR MOBILE USING THE 'CLICK & FIND' DEVICE



MOST RECENT LOCATION



MARK AS LOST



REMOTE SELFIE SHOOTER



## THE SMARTEST WAY TO FIND WHAT YOU ARE LOOKING FOR





# SGT FLEX

**CALL FOR PRICING**

*“Pocket Sized **XTOOL**”*  
*Powered by your phone or tablet*

## Included Software



## Available Software



**CALL FOR PRICING**



Connects to Phone with Bluetooth 3.0 / 4.0



**LOVE YOUR XTOOL?**

**PUT A *FLEX* IN EVERY VAN!**



To see the new FLEX in action go to [www.sgtsolutions.com.au](http://www.sgtsolutions.com.au)

**STILL PAYING TOKENS?**

**BUY A *FLEX* FOR THE MOST COMMON VEHICLES**



# Combi-Line

## CL60-E



30 Min fire rating



\$33,000 insurable rating



Floor & wall fixing options



111 kg / 78 litre capacity

**CALL FOR PRICING**

**NEW**



**Full Combi-Line Range:**

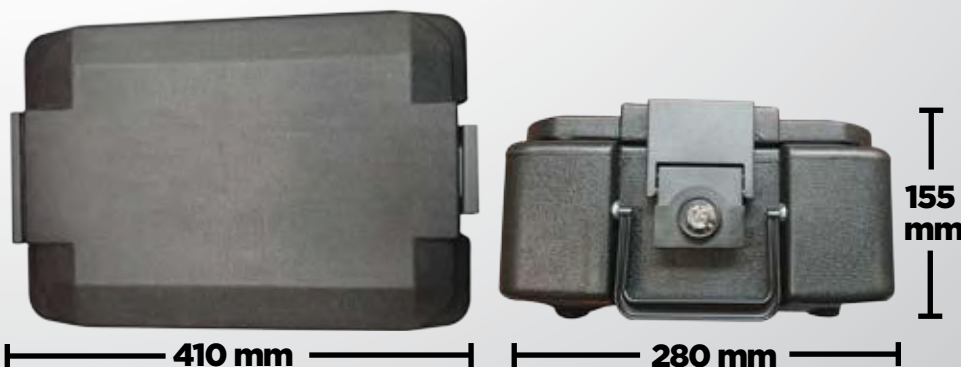
Article	Exterior H x W x D	Interior H x W x D	Door H x W	Weight	Content
	mm	mm	Opening mm	kg	L
CL 10 E	320 x 435 x 380	205 x 320 x 232	205 x 265	44.00	15.00
CL 20 E	360 x 495 x 445	245 x 380 x 297	245 x 325	55.00	27.00
CL 40 E	560 x 495 x 445	445 x 380 x 297	445 x 325	77.00	50.00
CL 60 E	820 x 495 x 445	694 x 380 x 297	694 x 324	111.00	78.00

**BURG  
WÄCHTER**

**NEW**  
**FireProtec**  
**Fire - Resistant Box**



- Document box
- Protection against burglary and fire
- Certified protection against fire #UL 72 (30 min Mac 1093°C)
- Double walled robust high-quality fire proof plastic
- Ideal For documents, paper, data ect.



**Art. FP22-K**

**CALL FOR  
PRICING**





LOCKTON

Free Engraving

# FREE LASER ENGRAVING

ON ALL "BOX OF 10" CYLINDER &  
PADLOCK PURCHASES OVER \$150



*No Setup Fees or  
additional costs*

*"Quick" turnaround after  
design approval*



LOCKTON



**LOCKTON**

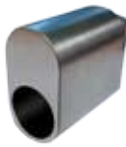
Free Engraving

# MIX AND MATCH ANY "BOX OF 10" COMBINATIONS

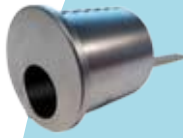
## EXAMPLE 1



+



+



=

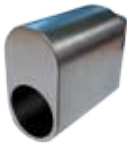
**FREE  
DESIGN  
SETUP**

+

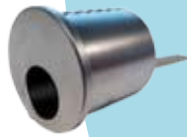
**FREE  
ENGRAVING**

10x 45-ALB 10x 410-SC-ALB 10x 420-SC-ALB

## EXAMPLE 2



+



=

**FREE  
DESIGN  
SETUP**

+

**FREE  
ENGRAVING**

20x 410-SC-ALB 10x 420-SC-ALB

Any size LOCKTON  
Padlocks



40mm

45mm

50mm

55mm

## NEW TOYOTA SMART KEY

The New OEM **SK-TOY-8A-FSK-BL** works with New Toyota Hilux models with Proximity functions:

- Hilux (PROX) 2015-2017

Please check the **SRS** for complete compatibility.

**SRS XTOOL**



Art. KEY-HILUX  
**CALL FOR PRICING**

COMPATIBLE WITH



Art. SK-TOY-8A-FSK-BL  
**CALL FOR PRICING**

## NEW HOLDEN SMART KEY

The New **SK-GM-3B-1** works with Holden Cruze vehicles with Proximity functions:

- Cruze (PROX) 2011-2017

Please check the **SRS** for complete compatibility.

**SRS XTOOL**



COMPATIBLE WITH



Art. SK-GM-3B-1  
**CALL FOR PRICING**



# VEHICLE SOLUTIONS

## NEW FORD SMART KEY

The New OEM **SK-FO-2B** works with New FORD Ranger models with Proximity Functions:

- Ranger PX MKIII (PROX) 2018+

Please check the **SRS** for complete compatibility.

**SRS XTOOL**



COMPATIBLE WITH

Art. EB-FO-24-2

**CALL FOR PRICING**

↗ SGT **FLEX** ↗ SGT **XTOOL**

Art. SK-FO-2B

**CALL FOR PRICING**

## NEW FORD REMOTE KEY

The New **KR-FO-3B-2** works with Various FORD Models with Integrated Remote key functions:

- Focus 2012-2016
- Fiesta 2009-2015
- Mondeo 2011-2014
- Ranger 2012-2015

Please check the **SRS** for complete compatibility.

**SRS XTOOL**



COMPATIBLE WITH

↗ SGT **FLEX** ↗ SGT **XTOOL**

Art. KR-FO-3B-2

**CALL FOR PRICING**

# SRS

# UPDATE

Date of Update:  
**15th August 2019**

## NEW PROX VEHICLES



Toyota Hilux 2015+ (PROX)  
Ford Ranger PK MKIII (PROX)  
Holden Cruze JH (PROX)  
Ford Transit 2014-2019 (Bladed)  
Hyundai Elantra MD3 -2015-2016 ( PROX )

## AUS UPDATE 2019

*Added XTOOL Pin Reading , Remote & Transponder programming for the following vehicles*

Holden Astra TS 1998 - 2004  
Holden Astra TS Convertible 1998 - 2004  
Holden Astra TS 1998 - 2004  
Holden Astra TR 1996 - 1998  
Holden Astra AH 2004 - 2009  
Holden Barina TK 2005 - 2011  
Holden Viva JF 2005 - 2008  
Holden Trax TJ 2013 - 2017  
Holden Barina TM 2011 - 2015  
Holden Colorado RG - 7 2012 - 2017  
Ford Transit ALL 2014 - 2016  
Ford Transit ALL 2017 - 2019  
Ford Ranger PX MKIII 2018 - 2019  
Ford Falcon FG (series 1) 2008 - 2010  
Ford Falcon FG (Series 2) 2011 - 2014  
Ford FG X 2014 - 2016  
Ford Territory SZ MKI 2011 - 2014  
Ford Territory SZ MKII 2015 - 2016  
Ford Escape (PROX) ZG 2016 - 2018  
Ford Focus (PROX) LZ 2014 - 2018  
Suzuki Alto- PROX GEN 8 2014 - 2019  
Suzuki Alto GEN 8 2014 - 2019  
Suzuki Baleno- PROX 2016 -2019  
Suzuki Baleno 2016 - 2019  
Suzuki Jimny - PROX 2018 - 2019  
Suzuki jimny 2018 - 2019  
Suzuki Vitara PROX 2018 -2019  
Suzuki Vitara 2018 - 2019  
Suzuki Grand Vitara- PROX 2018 - 2019  
Suzuki Grand Vitara 2018 - 2019  
Toyota Hilux [H-Key PROX] 2015 - 2017





**SRS XTOOL**

**SRS KDFULL**

# ADDITIONS & REPAIRS

Updated part numbers for Nissan Navara aftermarket keys.

Added Toyota Prius 2009-2014 nhp10r all data

Corrected years on Toyota Prius 2009-2014 zvw-40r

NB compatibility for Honda cr-z, accord euro, odyssey, cr-v, city, jazz, odyssey

Added Xtool path for Suzuki Vitara LY

Added New column KDX2 special remote copy- yes /no

Added Hyundai i-load 2018 keyway info

Added Holden Captiva prox cg info-added xtool-smart key options etc.

Added Hyundai IX35 prox 2014-2017

Added JMA TPX8 cloning option to id48 vehicles

Added Xtool remote programming pathway for- Volkswagen Golf 1J & 1K

Added Hyundai tucson 2015-2017 all data

Added remote data to Suzuki Alto

Added VW Amorok xtool remote programming pathway

Added hyn#156 key blade and remote programming for Hyundai i30 PD

New pathways for Mitsubishi Triton remote and immo

Added Kia Optima tf all data

Repaired remote compatibility for Lexus lx470 1998 -2002

Added all data for Lexus lx470 2002 - 2007

Repaired Mitsubishi Colt year model range and remote programming procedures

Added new Mitsubishi 380 and added pin code xtool pathway

Fixed Mitsubishi Magna chip id

Updated keydiy info for Toyota Yaris 2005 - 2011

Updated keydiy info for Toyota Hilux 2004 - 2009

Updated keydiy info for Toyota Hilux 2009 - 2014

Added Mazda MX5 NC series 1 all data

Added Honda Accord 2007-2008 kd remote option

Added Toyota FJ cruiser all data

Repaired Toyota Tarago 2000-2003 chip info and xtool compatibility

Added Nissan Navara NP300 all data

Repaired Isuzu Mu-x series 1 all data

Added new remote option for Kia Rio UB

Added Nissan Qashqai Non Prox Remote

**We offer a FREE KEYDIY B11 Remote to customers who contribute by providing us with programming info and procedures for any vehicles that is not found in the SRS.**

**[support@siepergroup.com](mailto:support@siepergroup.com)**

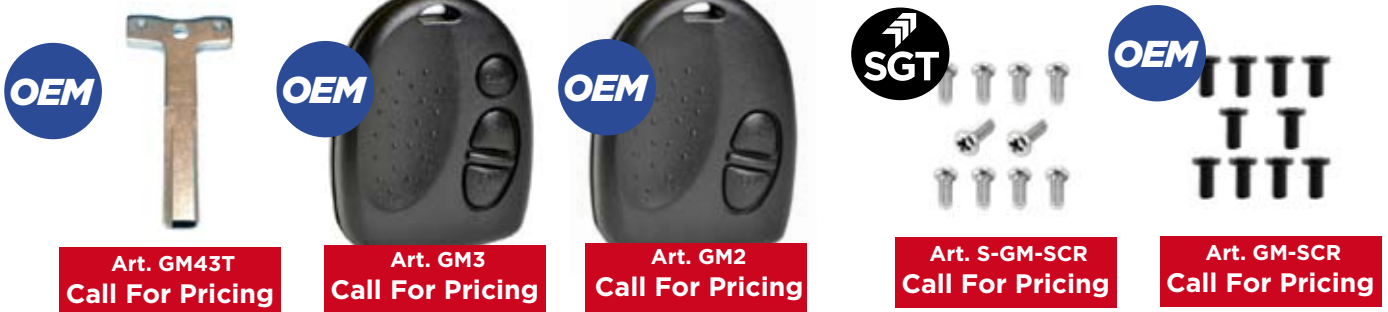




# GM / HOLDE

## OEM & Aftermarket Keys - Remotes

### Commodore VS-VZ



### Commodore VE



### Astra AH



### Captiva (Prox)



### Commodore VF (Prox)



### Cruze (Prox)



# N PARTS 2019

## JMA Keys & shells

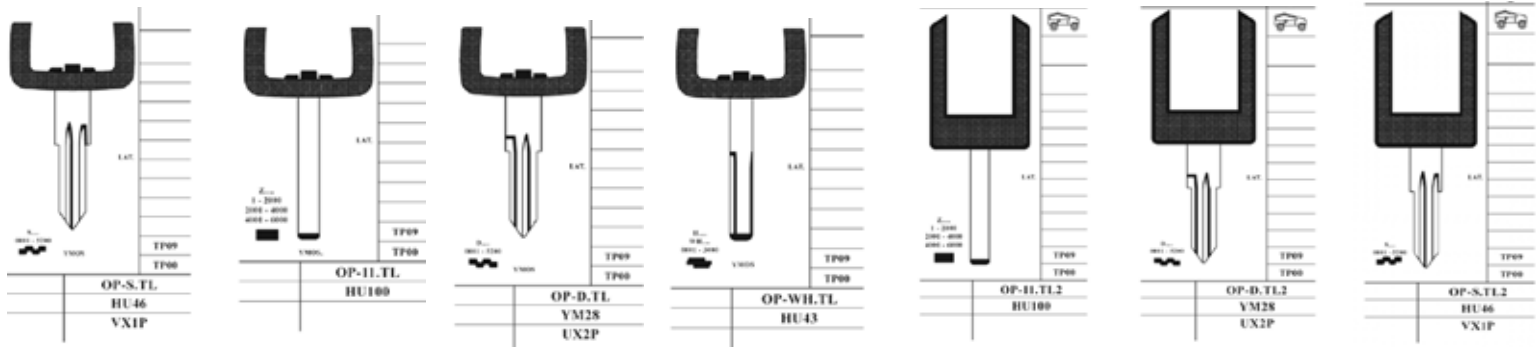
### Commodore VE



Art. GMVE-BRP  
Call For Pricing

Art. GMVE-BRP-2  
Call For Pricing

# JMA<sup>®</sup>



Art. OP-S.TL  
Call For Pricing

Art. OP-11.TL  
Call For Pricing

Art. OP-D.TL  
Call For Pricing

Art. OP-WH.TL  
Call For Pricing

Art. OP-11.TL2  
Call For Pricing

Art. OP-D.TL2  
Call For Pricing

Art. OP-S.TL2  
Call For Pricing

## Ignition & Door Locks

### Commodore VE Lockset



OEM

Art. GM-IGN-VE  
Call For Pricing

### HU46 Ignition Suits Astra/Barina etc

SGT



Art. GM-IGN.AB  
Call For Pricing

### Commodore VT-VZ Ignition

OEM



Art. GM-IGN.VT  
Call For Pricing

# XTOOL

NEW SOFTWARE RELEASE ON  
**AUS FORD** AVAILABLE NOW

**FORD**  
**PK Ranger**  
**Mazda**  
**UN BT-50**



## 8C- Pincode Reading

MODELS INCLUDE:

FORD RANGER PJ/PK  
Series 2006-2011

MAZDA BT-50 UN  
Series 2006-2011

PROGRAMMABLE WITH



SEE COMPATIBILITY ON

SRS XTOOL

SRS KDFULL



# JMA<sup>®</sup>

# TRS-5000 EVO



**SIMPLEST SOLUTION FOR  
DUPLICATING TRANSPONDER  
VEHICLE KEYS**



**Free JMA  
Starter pack**

**CALL FOR  
PRICING**

## TRADE IN DEAL!

*Trade in any old cloner with the  
purchase of a JMA EVO & get  
ID48 Cloning included FREE*



## ALREADY OWN AN EVO? GET THE PACK TPX8



**ID48 MEGAMOS CRYPTO CLONING KIT**

**Kit Includes:**

JMA ID48 Cloning software

10x TPX8 Chips (worth \$24.90 Each)



Art. EVO-PACK-TPX8

**CALL FOR  
PRICING**



# ORIGINAL LISHI TOOLS



## V.A.G HU162T Range

LP# HU162-2015-AG

Low Security Model  
Works on budget models such as POLO  
Pick & Decoder with NO Sidecuts  
Works IGN & DR



**CALL FOR PRICING**

LP# HU162-SC3-D-AG

LP# HU162-SC-I-AG

Medium Security Model Works on  
MID range models such as GOLF  
Pick & Decoder with 3x Sidecuts  
Works DR Only

Medium Security Model Works on  
MID range models such as GOLF  
Pick & Decoder  
Works IGN only



LP# HU162-SC3-D-AG

**CALL FOR PRICING**



LP# HU162-SC-I-AG

**CALL FOR PRICING**

LP# HU162-SC4-D-AG

High Security Model - Works on Luxury  
range (Smart Key Models)  
models such as A6  
Pick & Decoder with 4x Sidecuts  
Works DR Only



LP# HU162-SC4-D-AG

**CALL FOR PRICING**



Order at [sglocks.com.au](http://sglocks.com.au)



# ORIGINAL LISHI TOOLS



## DOMESTIC RANGE EXTENDED

EXCLUSIVE to **SGLOCKS**

book into the training course being held at the MLLA conference NZ



### NEW LISHI INLINE RANGE

Art. No	Description	Price ex. GST
LP-SC1-AG	Suits Keyways SC1 (5 Pin)	CALL FOR PRICING
LP-SC4-AG	Suits Keyways SC4 (6 Pin)	CALL FOR PRICING
LP-KW1-AG	Suits Keyways KW1 (5 Pin)	CALL FOR PRICING
LP-KW5-AG	Suits Keyways KW5 (6 Pin)	CALL FOR PRICING

### EXISTING LISHI INLINE RANGE

Art. No	Description	Price ex. GST
LP-LW4-AG	Suits Keyways C4 (5 Pin)	CALL FOR PRICING
LP-LW5-AG	Suits Keyways C4 (6 Pin)	CALL FOR PRICING
LP-TE2-AG	Suits Keyways TE2 (5 Pin)	CALL FOR PRICING

Order at [sglocks.com.au](http://sglocks.com.au)





Get your entries  
in ASAP

**Conference Registrations**  
for the winner &  
their partner will be  
**Reimbursed**  
(Shop & Van)



2019  
**LOCKSMITH  
SHOP  
OF THE YEAR**



Enter your SHOP to be in the running  
to win \$5,000 worth of prizes

Please consider the **Judging Criteria**  
below for your entry

**External - Look / Signage etc.**

1. Is it clear that it is a Locksmith Shop?
2. Visual appeal & attraction
3. Does the shop clearly display the MLAA logo?

**Internal - Fit Out**

1. Use of space & design of retail showroom
2. Variety of product categories represented

**Innovation - Bonus Points**

1. Extra points awarded for innovative/creative ideas



State Wide Locksmiths (2018 SOTY Winner)

There will be 5 finalists from each category  
(Shop & Van). All entries will receive a gift  
from SIEPER Group

Both finalists & winners will receive  
certificates & rights to participate  
with this achievement



Hilton Auckland, Princes Wharf, 147 Quay Street,  
Auckland, New Zealand



Friday & Saturday, 18-19 October 2019



Register Today at :  
[www.locksmiths2019.conferenceworks.com.au](http://www.locksmiths2019.conferenceworks.com.au)

# 2019

MASTER  
LOCKSMITHS  
LIFE TIME GUARANTEE

# LOCKSMITH VAN OF THE YEAR



SPONSORED BY  
SGLOCKS

**2 nights Hotel Accomodation**  
for the winner &  
their partner will be  
**Reimbursed**  
(Shop & Van)

## Enter your VAN to be in the running to win \$2,000 worth of prizes

### Please consider the Judging Criteria below for your entry

#### External - Look / Signage etc.

1. Is it clear that it is a Locksmith Van?
2. Visual appeal & attraction
3. Are contact details clearly shown?
4. Does the van clearly display the MLAA logo?

#### Internal - Fit Out

1. Use of space & design of van layout
2. Efficiency of the work areas in the van

#### Innovation - Bonus Points

1. Extra points awarded for innovative/creative ideas

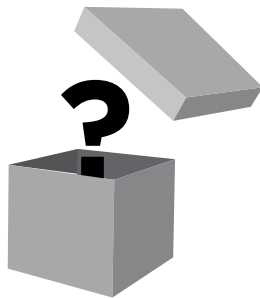


ArgyleLocksmiths (2018 VOTY Winner)

Winners will receive  
to promote their business  
for the next 12 months

Entries close 30/09/2019  
with 5 finalists being judged by the  
19/10/2019

## FREE Gift with every entry



## ENTRY FORMS ENCLOSED GOOD LUCK!

SG Lock & Security  
LOCKSMITH SHOP OF THE YEAR 2019  
Entry Form

Please consider the Judging Criteria below for your entry

When submitting your entry, please ensure you provide the following information:

1. Is it clear that it is a Locksmith Van?  
2. Visual appeal & attraction  
3. Are contact details clearly shown?  
4. Does the van clearly display the MLAA logo?

Internal - Fit Out

1. Use of space & design of van layout  
2. Efficiency of the work areas in the van

Innovation - Bonus Points

1. Extra points awarded for innovative/creative ideas

Please send your entry to: [mlaa@sglocks.com.au](mailto:mlaa@sglocks.com.au) or Fax: 02 9748 0566

SG Lock & Security  
LOCKSMITH VAN OF THE YEAR 2019  
Entry Form

Please consider the Judging Criteria below for your entry

External - Look / Signage etc.

1. Is it clear that it is a Locksmith Van?  
2. Visual appeal & attraction  
3. Are contact details clearly shown?  
4. Does the van clearly display the MLAA logo?

Internal - Fit Out

1. Use of space & design of van layout  
2. Efficiency of the work areas in the van

Innovation - Bonus Points

1. Extra points awarded for innovative/creative ideas

Please send your entry to: [mlaa@sglocks.com.au](mailto:mlaa@sglocks.com.au) or Fax: 02 9748 0566



## XTOOL - FORD/MAZDA 8C PASSCODE READING

The purpose of this month's tech tip is to explain how the XTOOL can read the 8 digit passcode through the OBD port on the following vehicles;

- FORD RANGER PJ/PK Series 2006-2011
- MAZDA BT-50 UN Series 2006-2011

This New feature will mean that the ECU will No longer have to be disassembled to retrieve the EEPROM data or passcodes will need to be sourced from the dealership.  
The Passcode is needed to Program keys into the vehicles immobiliser system however the procedure to program keys is Manual- Not Diagnostic.  
Transponders must be 8C pre-coded for FORD/MAZDA to be introduced into the vehicle. Cloning transponders will not work unless you pre-code them with special software.

### Reading the Passcode:

To Read the Passcode for both Mazda & Ford use the following Pathway: AUS FORD \ AUS FORD \ RANGER PK \ READ PIN  
The XTOOL will now calculate the passcode and display it on the screen.  
If you select Program keys on XTOOL it will automatically insert the passcode into the Manual procedure to assist with the steps (see below).

### Entering Programming Mode

There are 2x ways to enter programming mode see below;

#### Type 1.

Open the driver's door & Insert the key into the steering lock and hold for at least 1 second.

(Ensure you can hear the key reminder beeping)

Remove and insert the key fully 5x or more times at no more than 1 second intervals until the security light begins to Flash rapidly. Once this happens leave the Key in the Ignition in the OFF position.

#### Type 2.

Open the driver's door & Insert the key into the steering lock and hold for at least 1 second.

(Ensure you can hear the key reminder beeping)

Turn the key ON and OFF 5x or more times at no more than 1 second intervals until the security light begins to Flash rapidly. Once this happens leave the Key in the Ignition in the OFF position

After 5 minutes the immobiliser light will begin to flash slower & the Passcode can now be entered.

### How to enter the Passcode

Turn the KEY ON whilst the Light is OFF to enter the digits from the passcode  
- Count the amount of Flashes to the value of the Digit from the passcode and turn the key OFF whilst the light is OFF to register it.  
(Always Turn the key ON and OFF between flashes, not while the light is lit)

### when the immobiliser light starts flashing slower:

Turn key ON and count the flashes equal to the 1st digit of the code (X) then turn key OFF.  
let the light flash up to 3x between entering the next digit.  
Turn key ON and count the flashes equal to the 2nd digit of the code (X) then turn key OFF.  
let the light flash up to 3x between entering the next digit.  
Turn key ON and count the flashes equal to the 3rd digit of the code (X) then turn key OFF.  
let the light flash up to 3x between entering the next digit.  
Turn key ON and count the flashes equal to the 4th digit of the code (X) then turn key OFF.  
let the light flash up to 3x between entering the next digit.  
Turn key ON and count the flashes equal to the 5th digit of the code (X) then turn key OFF.  
let the light flash up to 3x between entering the next digit.  
Turn key ON and count the flashes equal to the 6th digit of the code (X) then turn key OFF.  
let the light flash up to 3x between entering the next digit.  
Turn key ON and count the flashes equal to the 7th digit of the code (X) then turn key OFF.  
let the light flash up to 3x between entering the next digit.  
Turn key ON and count the flashes equal to the 8th digit of the code (X) then turn key OFF.  
If the Passcode was entered correctly the light will stop flashing and remains on solid.  
If the light continues to flash at this point, the code was entered incorrectly. (procedure needs to be started again)  
Start the vehicle with each Key to be programmed (minimum 2) Wait for the security light to extinguish on each before starting with the Next Key.

SG Tech Team

Want to get in touch or have an enquiry for the SG Tech Team? Call us on (02) 9352 0604

Online Promo \$590+

**FREE**

with online orders over \$590.00\*



DOUBLE ENDED SNAP HOOK

OR



LUGGAGE STRAP

Order total excludes GST Offer valid from 1st September 2019, while stocks last, only 1 promo gift applies to each order

Online Promo \$890+

**FREE**

with online orders over \$890.00\*



RECHARGABLE UHF WALKIE TALKIE

155 Group Channel  
iVOX Hands-free  
LED Torch  
Voice Encryption  
Squelch Level (1-9)



ALWAYS THE SAFE CHOICE!



lockdecoders



Find us as SG Lock & Security



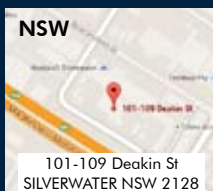
Like us on



www.facebook.com/SG.LockandSec



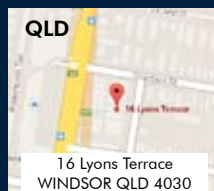
Head Office  
PH : 02 9352 0600  
FAX: 02 9748 0566



101-109 Deakin St  
SILVERWATER NSW 2128

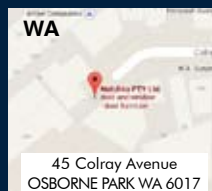
Your Sales Managers:

Cole Cullen  
0404 808 807



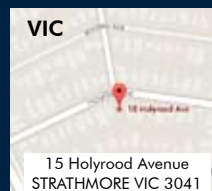
16 Lyons Terrace  
WINDSOR QLD 4030

Vince Carson  
0437 770 576



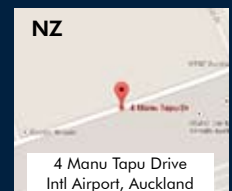
45 Colray Avenue  
OSBORNE PARK WA 6017

Jason Baker  
0438 909 840



15 Holyrood Avenue  
STRATHMORE VIC 3041

Henry Guldon  
0400 613 714



4 Manu Tapu Drive  
Intl Airport, Auckland

NZ Toll Free  
0800 00 15 98